

# One Step HIV 1/2

## Whole Blood/Serum/Plasma Test

**1.7** million people is newly infected by HIV. <sup>[1]</sup>

**37.7** million people is currently living with HIV infection globally.<sup>[2]</sup>

**15%** of populations living with HIV infection are unaware of their status. <sup>[2]</sup>

CDC recommends that everyone between the ages of 13 and 64 get tested for HIV at least once as part of routine health care.<sup>[3]</sup>

[1] Global progress report on HIV, viral hepatitis and sexually transmitted infections, WHO, 2021

[2] HIV data and statistics, WHO, 2020; <http://www.who.int/hiv/en/>

[3] HIV testing, CDC; <https://www.cdc.gov/hiv/testing>

# One Step HIV 1/2 Whole Blood/Serum/Plasma Test

Wondfo One Step HIV1/2 Whole Blood/Serum/Plasma Test is a rapid immunochromatographic direct binding test for the qualitative detection of HIV1/2 antibodies in human venous whole blood, fingerstick whole blood, serum or plasma as an aid in the diagnosis of HIV infection.



## ◆ Reliable Quality

WHO Prequalified

3<sup>rd</sup> generation technology (detects IgM and IgG anti-bodies)

## ◆ Accurate Performance

Sensitivity: **100%** / Specificity: **99.96%**

## ◆ Flexible Specimen Type

Fingertip whole blood, venous whole blood, serum and plasma

## ◆ Easy-to-use

Test in 3 steps / Interpret result in 15 minutes

## ◆ Stable Storage

At 2-30 °C for 24 months

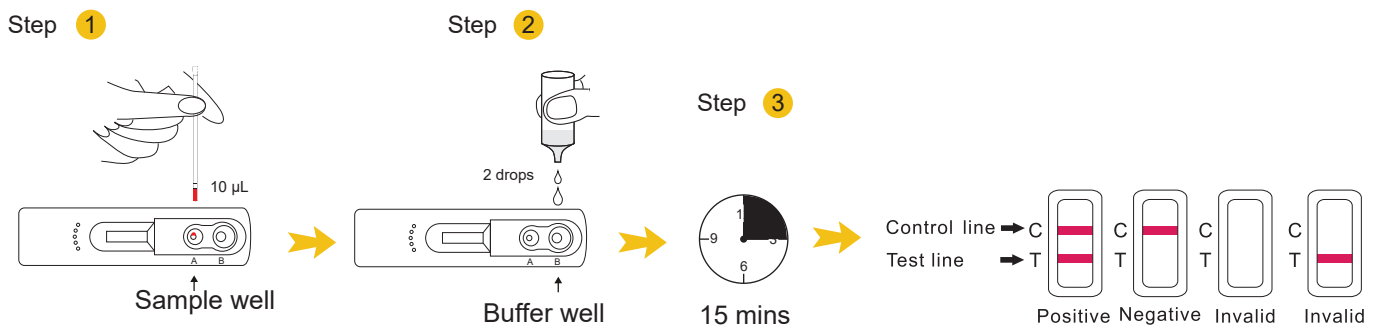
## Clinical Performance

Sample type	Sensitivity	Specificity
WB	100%	100%
Serum	100%	100%
Plasma	100%	99.95%
Total	100%	99.96%

## Order Information

Pack size	Catalog No.	Pack size	Catalog No.
25 T/Kit	W006-C4P2	40 T/Kit	W006-C4P2-F
25 T/Kit	W006-P0045 (Sterile lancet)	40 T/Kit	W006-P0049 (Sterile lancet)
25 T/Kit	W006-P0046 (Safety lancet) 18G	40 T/Kit	W006-P0050 (Safety lancet) 18G
25 T/Kit	W006-P0047 (Safety lancet) 21G	40 T/Kit	W006-P0051 (Safety lancet) 21G
25 T/Kit	W006-P0048 (Safety lancet) 23G	40 T/Kit	W006-P0052 (Safety lancet) 23G

## Test Procedure in 3 simple steps



Guangzhou Wondfo Biotech Co., Ltd.  
 No. 8 Lizhishan Road, Science City, Huangpu District,  
 510700, Guangzhou, P.R. China  
 E-mail: sales@wondfo.com.cn  
 Tel: (+86) 400-830-8768  
 Website: en.wondfo.com



# One Step HIV 1/2 Whole Blood/Serum/Plasma Test

Wondfo One Step HIV1/2 Whole Blood/Serum/Plasma Test is a rapid immunochromatographic direct binding test for the qualitative detection of HIV1/2 antibodies in human venous whole blood, fingerstick whole blood, serum or plasma as an aid in the diagnosis of HIV infection.

## ◆ Reliable Quality

3<sup>rd</sup> generation technology

## ◆ Accurate Performance

Sensitivity: 100% / Specificity: 99.96%

## ◆ Flexible Specimen Type

Fingertip whole blood, venous whole blood, serum and plasma

## ◆ Easy-to-use

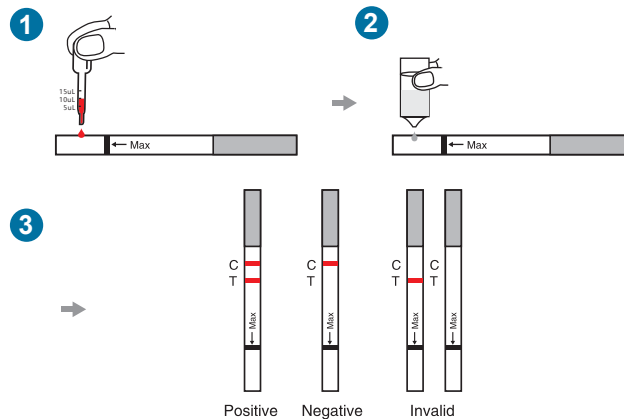
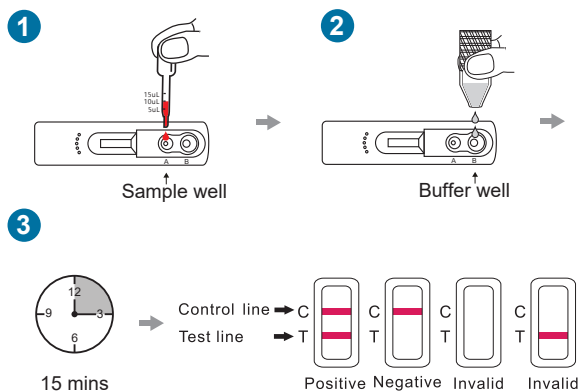
Test in 3 steps / Receive result in 15 minutes

## ◆ Stable Storage

At 2-30°C for 24 months



## TEST PROCEDURE IN 3 SIMPLE STEPS



## CLINICAL PERFORMANCE

Population	Wondfo HIV1/2 test Sensitivity
HIV-1 Ab positive specimens	100%
Non-B subtypes HIV-1 Ab positive specimens	100%
HIV-2 positive specimens	100%
Total	100%

Population	Wondfo HIV1/2 test Sensitivity
Blood donor	100%
Whole blood donor	100%
Hospitalized patient	99.50%
Pregnant women	100%
Total	99.96%

Sensitivity of One Step HIV 1/2 Whole Blood/Serum/Plasma Test: 100%  
Specificity of One Step HIV 1/2 Whole Blood/Serum/Plasma Test: 99.96%

## ORDER INFORMATION

Product name	Format	Pack size	Catalog No.
One Step HIV 1/2 Whole Blood/Serum/Plasma Test	Cassette	25T	W006-C
	Strip	50T	W006-S



Guangzhou Wondfo Biotech Co., Ltd.  
No.8 Lizhishan Road, Science City, Luogang District, 510663,  
Guangzhou, P.R.China  
Tel: (+86)400-830-8768  
E-mail: sales@wondfo.com.cn  
Website: en.wondfo.com.cn



# One Step HIV 1/2 Whole Blood/Serum/Plasma Test

Wondfo One Step HIV1/2 Whole Blood/Serum/Plasma Test is a rapid immunochromatographic direct binding test for the qualitative detection of HIV1/2 antibodies in human venous whole blood, fingerstick whole blood, serum or plasma as an aid in the diagnosis of HIV infection.



W752

## Reliable Quality

CE<sub>0123</sub>

3<sup>rd</sup> generation technology

## Accurate Performance

Sensitivity: 100%

Specificity: 99.96%

## Easy-to-use

Test in 3 steps

Receive result in 15 minutes

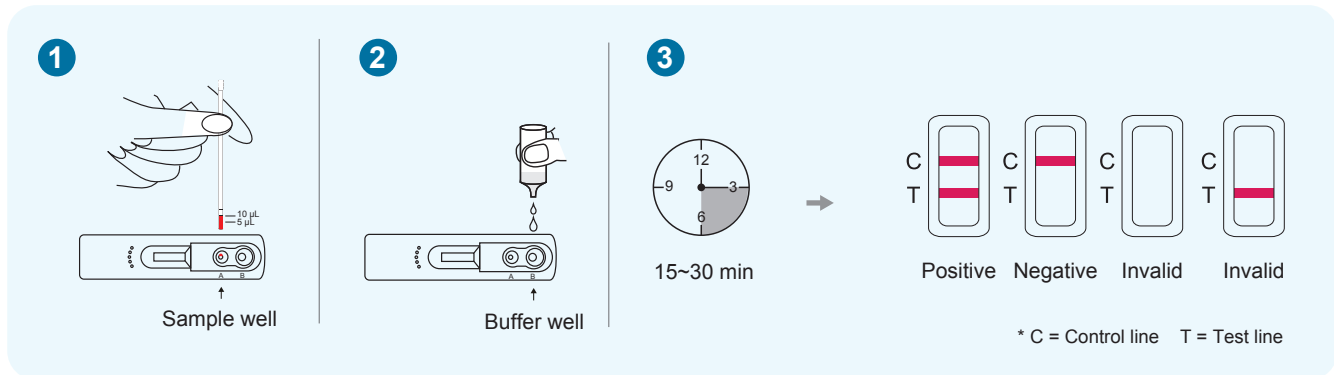
## Flexible Specimen Type

Fingertip whole blood, venous whole blood, serum and plasma

## Stable Storage

At 2-30°C for 24 months

## TEST PROCEDURE IN 3 SIMPLE STEPS



## CLINICAL PERFORMANCE

Population	Wondfo HIV1/2 test Sensitivity
HIV-1 Ab positive specimens	100%
Non-B subtypes HIV-1 Ab positive specimens	100%
HIV-2 positive specimens	100%
Total	100%

Population	Wondfo HIV1/2 test Sensitivity
Blood donor	100%
Whole blood donor	100%
Hospitalized patient	99.50%
Pregnant women	100%
Total	99.96%

Sensitivity of One Step HIV 1/2 Whole Blood/Serum/Plasma Test: 100%

Specificity of One Step HIV 1/2 Whole Blood/Serum/Plasma Test: 99.96%

## ORDER INFORMATION

Product Name	Format	Pack Size	Catalog No.	Qualification
One Step HIV 1/2 Whole Blood/Serum/Plasma Test	Cassette	25T	W752-C4G3-E	CE <sub>0123</sub>
	Cassette	40T	W752-C4G3-F	CE <sub>0123</sub>



Guangzhou Wondfo Biotech Co., Ltd.  
No. 8 Lizhishan Road, Science City, Huangpu District,  
510700, Guangzhou, P.R. China  
E-mail: sales@wondfo.com.cn  
Tel: (+86) 400-830-8768  
Website: en.wondfo.com



Rev. A1 Rel.: 2022/10/11